

ER DIN6499(ISO115488)

COLLET 筒夹

型号 Model	D	D1	L	L1	L2
ER08	8.5	6.5	13.5	1.5	1.2
ER11	11.5	9.5	18	2.5	2
ER16	17	12.8	27.5	4	2.7
ER20	21	17.4	31.5	4.8	2.8
ER25	26	22	34	5	3.1
ER32	33	29.2	40	5.5	3.6
ER40	41	36.2	46	7	4.1

检测条件 Test conditions		跳动精度 Beat accuracy	
D	L	AA	UP
1.0-1.4	6	0.008	0.005
1.5-2.9	10	0.008	0.005
3.0-5.9	16	0.008	0.005
6.0-9.9	25	0.008	0.005
10.0-17.9	40	0.008	0.005
18.0-26.9	50	0.008	0.005

订购时请注明精度等级“AA”“UP”
When Ordering Please Indicate The Precision Grade “AA” “UP”

规格 Gauge	AA级				UP级			
	夹持范围 Clamping Range	筒夹规格 Collet Specifications	间距尺寸 Spacing Size	允许夹持量 Allow the clamping Quantity	夹持范围 Clamping Range	筒夹规格 Collet Specifications	间距尺寸 Spacing Size	允许夹持量 Allow the clamping Quantity
ER08	0.5-5.0	1.0-5.0	0.5	0.5	2.6-5.0	3.0-5.0	1.0	0.4
ER11	0.5-7.0	1.0-7.0	0.5	0.5	2.6-7.0	3.0-7.0	1.0	0.4
ER16	0.5-4.0	1.0-4.0	0.5	0.5	3.6-10.0	4.0-10.0	1.0	0.4
	4.0-10.0	5.0-10.0	1.0	1.0				
ER20	0.5-4.0	1.0-4.0	0.5	0.5	3.6-13.0	4.0-13.0	1.0	0.4
	4.0-13.0	5.0-13.0	1.0	1.0				
ER25	0.5-6.0	1.0-6.0	0.5	0.5	5.6-16.0	6.0-16.0	1.0	0.4
	6.0-16.0	7.0-16.0	1.0	1.0				
ER32	1.6-7.0	2.0-7.0	0.5	0.5	5.6-20.0	6.0-20.0	1.0	0.4
	7.0-20.0	8.0-20.0	1.0	1.0				
ER40	2.6-8.0	3.0-8.0	0.5	0.5				
	8.0-26.0	9.0-26.0	1.0	1.0				

New Baby Collet

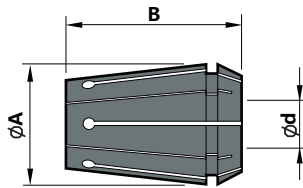
Clamping diameter: $\varnothing 0.25 - \varnothing 25.4$

新倍比筒夹

夹持直径: $\varnothing 0.25 - \varnothing 25.4$

- 广受好评的高精度夹套，端口跳动精度为 $2\mu\text{m}$ ，对应高速加工也能发挥很强威力。

Within $2\mu\text{m}$ runout accuracy at nose exhibits outstanding performance at ultra-high speeds.



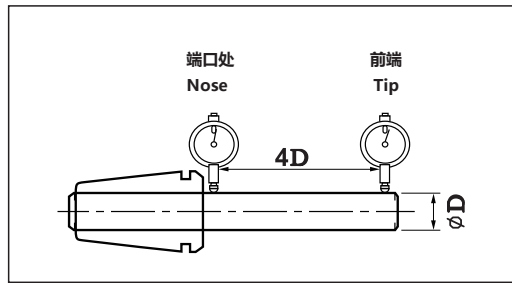
Model Description

NBC 6 - 0.5 AA

- Class (AA) 等级 (AA)
- Clamping diameter ($\varnothing d$) 夹持直径
- Body model size 对应本体尺寸
- Abbreviation of New Baby Collet 新倍比筒夹

筒夹单件精度 Collet accuracy

筒夹等级 Collet class	跳动精度 Runout accuracy	
	端口处 Nose	4倍直径前 4D
AA	$2\mu\text{m}$ 以内 Within $2\mu\text{m}$	$4\mu\text{m}$ 以内 Within $4\mu\text{m}$



规格 Gauge	AA 级	
	夹持范围 Clamping Range	允许夹持量 Allow the clamping Quantity
NBC6-0.5 AA	0.25-0.50	0.25
-0.75 AA	0.50-0.75	0.25
-1 AA	0.75-1.00	0.25
-1.25 AA	1.00-1.25	0.25
-1.5 AA	1.25-1.5	0.25
-1.75 AA	1.5-1.75	0.25
-2 AA	1.75-2.00	0.25
-2.25 AA	2.00-2.25	0.25
-2.5 AA	2.25-2.50	0.25
-2.75 AA	2.50-2.75	0.25
-3 AA	2.75-3.00	0.25
-3.175 AA	2.925-3.175	0.25

规格 Gauge	AA 级	
	夹持范围 Clamping Range	允许夹持量 Allow the clamping Quantity
NBC6-3.25 AA	3.00-3.25	0.25
-3.5 AA	3.25-3.5	0.25
-3.75 AA	3.5-3.75	0.25
-4 AA	3.75-4.00	0.25
-4.25 AA	4.00-4.25	0.25
-4.5 AA	4.25-4.50	0.25
-4.75 AA	4.5-4.75	0.25
-5 AA	4.75-5.00	0.25
-5.25 AA	5.00-5.25	0.25
-5.5 AA	5.25-5.50	0.25
-5.75 AA	5.50-5.75	0.25
-6 AA	5.75-6.00	0.25

$\varnothing A = 9.5, B = 14$

规格 Gauge	AA级	
	夹持范围 ClampingRange	允许夹持量 Allow the clampingQuantity
NBC8-0.75 AA	0.5-0.75	0.25
-1 AA	0.75-1.0	0.25
-1.25 AA	1.0-1.25	0.25
-1.5 AA	1.25-1.5	0.25
-1.75 AA	1.5-1.75	0.25
-2 AA	1.75-2.0	0.25
-2.25 AA	2.0-2.25	0.25
-2.5 AA	2.25-2.5	0.25
-2.75 AA	2.5-2.75	0.25
-3 AA	2.75-3.0	0.25
-3.175 AA	2.675-3.175	0.5
-3.5 AA	3.0-3.5	0.5

规格 Gauge	AA级	
	夹持范围 ClampingRange	允许夹持量 Allow the clampingQuantity
NBC8-4 AA	3.5-4.0	0.5
-4.5 AA	4.0-4.5	0.5
-5 AA	4.5-5.0	0.5
-5.25 AA	4.75-5.25	0.5
-5.5 AA	5.0-5.5	0.5
-5.75 AA	5.25-5.75	0.5
-6 AA	5.5-6.0	0.5
-6.5 AA	6.0-6.5	0.5
-7 AA	6.5-7.0	0.5
-7.5 AA	7.0-7.5	0.5
-8 AA	7.5-8	0.5

øA = 12.5, B = 18

规格 Gauge	AA级	
	夹持范围 ClampingRange	允许夹持量 Allow the clampingQuantity
NBC10-1.75 AA	1.5-1.75	0.25
-2 AA	1.75-2.0	0.25
-2.25 AA	2.0-2.25	0.25
-2.5 AA	2.25-2.5	0.25
-2.75 AA	2.5-2.75	0.25
-3 AA	2.75-3.0	0.25
-3.175 AA	2.675-3.175	0.5
-3.25 AA	2.75-3.25	0.5
-3.5 AA	3.0-3.5	0.5
-3.75 AA	3.25-3.75	0.5
-4 AA	3.5-4.0	0.5
-4.25 AA	3.75-4.25	0.5
-4.5 AA	4.0-4.5	0.5
-4.75 AA	4.25-4.75	0.5

规格 Gauge	AA级	
	夹持范围 ClampingRange	允许夹持量 Allow the clampingQuantity
NBC10-5 AA	4.5-5.0	0.5
-5.25 AA	4.75-5.25	0.5
-5.5 AA	5.0-5.5	0.5
-5.75 AA	5.25-5.75	0.5
-6 AA	5.5-6.0	0.5
-6.5 AA	6.0-6.5	0.5
-7 AA	6.5-7.0	0.5
-7.5 AA	7.0-7.5	0.5
-8 AA	7.5-8.0	0.5
-8.5 AA	8.0-8.5	0.5
-9 AA	8.5-9.0	0.5
-9.5 AA	9.0-9.5	0.5
-10 AA	9.5-10.0	0.5

øA = 16.5, B = 27

规格 Gauge	AA级	
	夹持范围 ClampingRange	允许夹持量 Allow the clampingQuantity
NBC13-3 AA	2.5-3.0	0.5
-3.175 AA	2.675-3.175	0.5
-3.25 AA	2.75-3.25	0.5
-3.5 AA	3.0-3.5	0.5
-3.75 AA	3.25-3.75	0.5
-4 AA	3.5-4.0	0.5
-4.25 AA	3.75-4.25	0.5
-4.5 AA	4.0-4.5	0.5
-4.75 AA	4.25-4.75	0.5
-5 AA	4.5-5.0	0.5
-5.25 AA	4.75-5.25	0.5
-5.5 AA	5.0-5.5	0.5
-5.75 AA	5.25-5.75	0.5
-6 AA	5.5-6.0	0.5

∅A =20.5, B = 31

规格 Gauge	AA级	
	夹持范围 ClampingRange	允许夹持量 Allow the clampingQuantity
NBC13-6.5 AA	6.0-6.5	0.5
-7 AA	6.5-7.0	0.5
-7.5 AA	7.0-7.5	0.5
-8 AA	7.5-8.0	0.5
-8.5 AA	8.0-8.5	0.5
-9 AA	8.5-9.0	0.5
-9.5 AA	9.0-9.5	0.5
-10 AA	9.5-10	0.5
-10.5 AA	10-10.5	0.5
-11 AA	10.5-11.0	0.5
-11.5 AA	11.0-11.5	0.5
-12 AA	11.5-12.0	0.5
-12.5 AA	12.0-12.5	0.5
-13 AA	12.5-13.0	0.5

规格 Gauge	AA级	
	夹持范围 ClampingRange	允许夹持量 Allow the clampingQuantity
NBC16-3 AA	2.5-3.0	0.5
-3.25 AA	2.75-3.25	0.5
-3.5 AA	3.0-3.5	0.5
-3.75 AA	3.25-3.75	0.5
-4 AA	3.5-4.0	0.5
-4.25 AA	3.75-4.25	0.5
-4.5 AA	4.0-4.5	0.5
-4.75 AA	4.25-4.75	0.5
-5 AA	4.5-5.0	0.5
-5.25 AA	4.75-5.25	0.5
-5.5 AA	5.0-5.5	0.5
-5.75 AA	5.25-5.75	0.5
-6 AA	5.5-6.0	0.5
-6.5 AA	6.0-6.5	0.5
-7 AA	6.5-7.0	0.5
-7.5 AA	7.0-7.5	0.5
-8 AA	7.5-8.0	0.5

规格 Gauge	AA级	
	夹持范围 ClampingRange	允许夹持量 Allow the clampingQuantity
NBC16-8.5 AA	8.0-8.5	0.5
-9 AA	8.5-9.0	0.5
-9.5 AA	9.0-9.5	0.5
-10 AA	9.5-10.0	0.5
-10.5 AA	10.0-10.5	0.5
-11 AA	10.5-11.0	0.5
-11.5 AA	11.0-11.5	0.5
-12 AA	11.5-12.0	0.5
-12.5 AA	12.0-12.5	0.5
-13 AA	12.5-13.0	0.5
-13.5 AA	13.0-13.5	0.5
-14 AA	13.5-14.0	0.5
-14.5 AA	14.0-14.5	0.5
-15 AA	14.5-15.0	0.5
-15.5 AA	15.0-15.5	0.5
-16 AA	15.5-16.0	0.5

∅A =25.5, B = 35

规格 Gauge	AA级	
	夹持范围 ClampingRange	允许夹持量 Allow the clampingQuantity
NBC20-3 AA	2.5-3.0	0.5
-3.25 AA	2.75-3.25	0.5
-3.5 AA	3.0-3.5	0.5
-3.75 AA	3.25-3.75	0.5
-4 AA	3.5-4.0	0.5
-4.25 AA	3.75-4.25	0.5
-4.5 AA	4.0-4.5	0.5
-4.75 AA	4.25-4.75	0.5
-5 AA	4.5-5.0	0.5
-5.25 AA	4.75-5.25	0.5
-5.5 AA	5.0-5.5	0.5
-5.75 AA	5.25-5.75	0.5
-6 AA	5.5-6.0	0.5
-6.5 AA	6.0-6.5	0.5
-7 AA	6.5-7.0	0.5
-7.5 AA	7.0-7.5	0.5
-8 AA	7.5-8.0	0.5
-8.5 AA	8.0-8.5	0.5
-9 AA	8.5-9.0	0.5
-9.5 AA	9.0-9.5	0.5
-10 AA	9.5-10.0	0.5

规格 Gauge	AA级	
	夹持范围 ClampingRange	允许夹持量 Allow the clampingQuantity
NBC20-10.5 AA	10.0-10.5	0.5
-11 AA	10.5-11.0	0.5
-11.5 AA	11.0-11.5	0.5
-12 AA	11.5-12.0	0.5
-12.5 AA	12.0-12.5	0.5
-13 AA	12.5-13.0	0.5
-13.5 AA	13.0-13.5	0.5
-14 AA	13.5-14.0	0.5
-14.5 AA	14.0-14.5	0.5
-15 AA	14.5-15.0	0.5
-15.5 AA	15.0-15.5	0.5
-16 AA	15.5-16.0	0.5
-16.5 AA	16.0-16.5	0.5
-17 AA	16.5-17.0	0.5
-17.5 AA	17.0-17.5	0.5
-18 AA	17.5-18.0	0.5
-18.5 AA	18.0-18.5	0.5
-19 AA	18.5-19.0	0.5
-19.5 AA	19.0-19.5	0.5
-20 AA	19.5-20.0	0.5

øA =28.5, B = 38

规格 Gauge	AA级	
	夹持范围 ClampingRange	允许夹持量 Allow the clampingQuantity
NBC25-16 AA	15.5-16.0	0.5
-16.5 AA	16.0-16.5	0.5
-17 AA	16.5-17.0	0.5
-17.5 AA	17-17.5	0.5
-18 AA	17.5-18.0	0.5
-18.5 AA	18.0-18.5	0.5
-19 AA	18.5-19.0	0.5
-19.5 AA	19.0-19.5	0.5
-20 AA	19.5-20	0.5
-20.5 AA	20-20.5	0.5

规格 Gauge	AA级	
	夹持范围 ClampingRange	允许夹持量 Allow the clampingQuantity
NBC25-21 AA	20.5-21.0	0.5
-21.5 AA	21.0-21.5	0.5
-22 AA	21.5-22.0	0.5
-22.5 AA	22.0-22.5	0.5
-23 AA	22.5-23.0	0.5
-23.5 AA	23.0-23.5	0.5
-24 AA	23.5-24.0	0.5
-24.5 AA	24.0-24.5	0.5
-25 AA	24.5-25.0	0.5
-25.4 AA	24.9-25.4	0.5

øA =35.5, B = 52

SK COLLET

SK 筒夹

型号 Model	D	D1	D2	d1	L	L1	L2
SK06	10.5	7.5	9.2	5.8	25	17	4
SK10	15.6	11.8	13	10	30	21.3	5
SK13	20.1	15.5	17	13	39	28	6
SK16	24.5	24.6	21	16	45	32	8
SK25	35.6	35.5	31	25.4	57	43	8.5

检测条件 Test conditions		跳动精度 Beat accuracy	
D	L	UP	
1.0-1.4	6	0.005	
1.5-2.9	10	0.005	
3.0-5.9	16	0.005	
6.0-9.9	25	0.005	
10.0-17.9	40	0.005	
18.0-26.9	50	0.005	

SK6

规格 Gauge	标准夹持径 Clamping Diameter	夹持范围 Clamping range	允许夹持量 Allow The Clamping Quantity
SK6-3	3.0	2.75-3.0	0.25
SK6-3.175	3.175	2.925-3.175	0.25
SK6-4	4.0	3.5-4.0	0.5
SK6-5	5.0	4.5-5.0	0.5
SK6-6	6.0	5.5-6.0	0.5

SK10

规格 Gauge	标准夹持径 Clamping Diameter	夹持范围 Clamping range	允许夹持量 Allow The Clamping Quantity
SK10-3	3.0	2.75-3.0	0.25
SK10-3.175	3.175	2.925-3.175	0.25
SK10-4	4.0	3.5-4.0	0.5
SK10-5	5.0	4.5-5.0	0.5
SK10-6	6.0	5.5-6.0	0.5
SK10-8	8.0	7.5-8.0	0.5
SK10-10	10.0	9.5-10.0	0.5

SK13

规格 Gauge	标准夹持径 Clamping Diameter	夹持范围 Clamping range	允许夹持量 Allow The Clamping Quantity
SK13-3	3.0	2.75-3.0	0.25
SK13-3.175	3.175	2.925-3.175	0.25
SK13-4	4.0	3.5-4.0	0.5
SK13-5	5.0	4.5-5.0	0.5
SK13-6	6.0	5.5-6.0	0.5
SK13-8	8.0	7.5-8.0	0.5
SK13-10	10.0	9.5-10.0	0.5
SK13-12	12.0	11.5-12.0	0.5

SK16

规格 Gauge	标准夹持径 Clamping Diameter	夹持范围 Clamping range	允许夹持量 Allow The Clamping Quantity
SK16-4	4.0	3.5-4.0	0.5
SK16-5	5.0	4.5-5.0	0.5
SK16-6	6.0	5.5-6.0	0.5
SK16-8	8.0	7.5-8.0	0.5
SK16-10	10.0	9.5-10.0	0.5
SK16-12	12.0	11.5-12.0	0.5
SK16-14	14.0	13.5-14.0	0.5
SK16-16	16.0	15.5-16.0	0.5

SK20

规格 Gauge	标准夹持径 Clamping Diameter	夹持范围 Clamping range	允许夹持量 Allow The Clamping Quantity
SK20-6	6.0	5.5-6.0	0.5
SK20-8	8.0	7.5-8.0	0.5
SK20-10	10.0	9.5-10.0	0.5
SK20-12	12.0	11.5-12.0	0.5
SK20-14	14.0	13.5-14.0	0.5
SK20-16	16.0	15.5-16.0	0.5
SK20-18	18.0	17.5-18.0	0.5
SK20-20	20.0	19.5-20.0	0.5

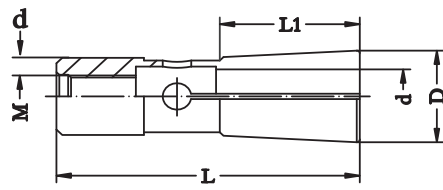
SK25

规格 Gauge	标准夹持径 Clamping Diameter	夹持范围 Clamping range	允许夹持量 Allow The Clamping Quantity
SK25-6	6.0	5.5-6.0	0.5
SK25-8	8.0	7.5-8.0	0.5
SK25-10	10.0	9.5-10.0	0.5
SK25-12	12.0	11.5-12.0	0.5
SK25-14	14.0	13.5-14.0	0.5
SK25-16	16.0	15.5-16.0	0.5
SK25-20	20.0	19.5-20.0	0.5
SK25-25	25.0	24.5-25.0	0.5

DC COLLET

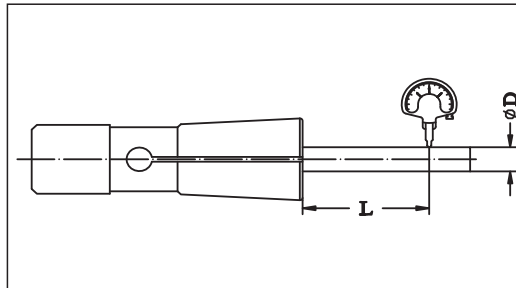
DC 筒夹

DC系列筒夹设计重点是强调立铣刀的夹持。铣刀插入筒夹内长度需达到4D以上，以发挥最佳效果。



型号 Model	L	D	d	M
DC4	31	7	5.6	M4
DC6	36	9.6	8.0	M5
DC8	45	15	12.8	M6
DC10	52	19	16	M8
DC12	60	22	19	M10

检测条件 Test conditions		跳动精度 Beat accuracy	
D	L	UP	
1.0-1.4	6	0.005	
1.5-2.9	10	0.005	
3.0-5.9	16	0.005	
6.0-9.9	25	0.005	
10.0-12	40	0.005	



DC4

规格 Gauge	标准夹持径 Clamping Diameter
-------------	----------------------------

DC4-2	2.0
DC4-3	3.0
DC4-3.175	3.175
DC4-4	4.0

DC6

规格 Gauge	标准夹持径 Clamping Diameter
-------------	----------------------------

DC6-3	3.0
DC6-3.175	3.175
DC6-4	4.0
DC6-5	5.0
DC6-6	6.0

DC8

规格 Gauge	标准夹持径 Clamping Diameter
-------------	----------------------------

DC8-3	3
DC8-4	4
DC8-6	6
DC8-8	8

DC10

规格 Gauge	标准夹持径 Clamping Diameter
-------------	----------------------------

DC10-3	3
DC10-4	4
DC10-6	6
DC10-8	8
DC10-10	10

DC12

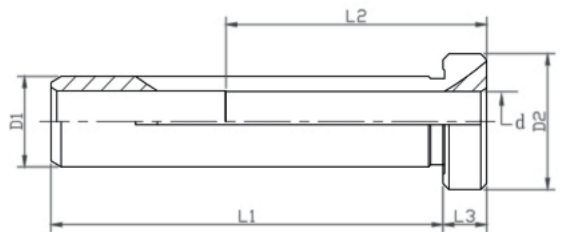
规格 Gauge	标准夹持径 Clamping Diameter
-------------	----------------------------

DC12-4	4
DC12-6	6
DC12-8	8
DC12-10	10
DC12-12	12

Hydraulic Reduction Bushes

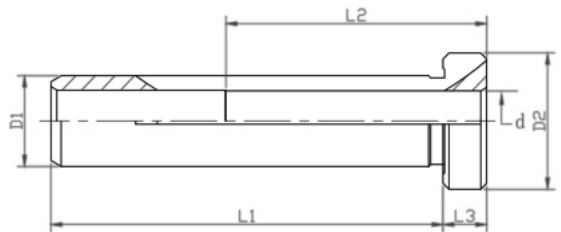
液压减径套筒

- 配合液压刀柄使用实现灵活的夹持范围
Used with hydraulic chuck to realize flexible clamping range
- 内部冷却 Internal cooling
可承受冷却液压力高达 80bar
Can withstand cooling liquid pressure up to 80bar
- 端面密封 Closed collar
如有更高精度需要可支持定制
Support customization for higher precision
- 精度等级 Accuracy class
 $3\mu\text{m} < \text{AA} \leq 5\mu\text{m} / \text{UP} \leq 3\mu\text{m}$ (Accuracy grade: $3\mu\text{m} < \text{AA} \leq 5\mu\text{m} / \text{UP} \leq 3\mu\text{m}$)



HS series-HS6

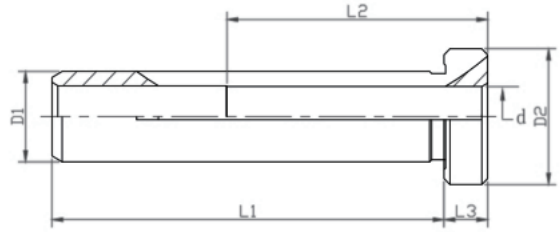
订购号码 Order number	规格 type	尺寸 size						精度 accuracy class
		d	D1	D2	L1	L2	L3	
HS600600030MIC	Φ3	3	6	9	27	15	3	AA/UP
HS60060003175IIC	Φ1/8"	3.175				15		AA/UP
HS600600040MIC	Φ4	4				20		AA/UP



HS series-HS8

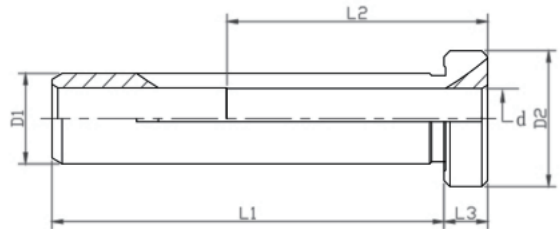
订购号码 Order number	规格 type	尺寸 size						精度 accuracy class
		d	D1	D2	L1	L2	L3	
HS800800030MIC	Φ3	3	8	11	32	15	3	AA/UP
HS80080003175IIC	Φ1/8"	3.175				15		AA/UP
HS800800040MIC	Φ4	4				20		AA/UP
HS80080004763IIC	Φ3/16"	4.763				20		AA/UP
HS800800050MIC	Φ5	5				25		AA/UP
HS800800060MIC	Φ6	6				30		AA/UP

HS series-HS10



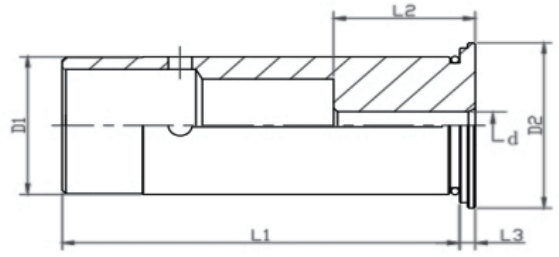
订购号码 Order number	规格 type	尺寸 size						精度 accuracy class
		d	D1	D2	L1	L2	L3	
HS1001000030MIC	Φ3	3	10	13	34	15	3	AA/UP
HS100100003175IIC	Φ1/8"	3.175				15		AA/UP
HS1001000040MIC	Φ4	4				20		AA/UP
HS100100004763IIC	Φ3/16"	4.763				20		AA/UP
HS1001000050MIC	Φ5	5				25		AA/UP
HS1001000060MIC	Φ6	6				30		AA/UP
HS10010000635IIC	Φ1/4"	6.35				30		AA/UP
HS1001000070MIC	Φ7	7				30		AA/UP
HS100100007938IIC	Φ5/16"	7.938				34		AA/UP
HS1001000080MIC	Φ8	8				34		AA/UP

HS series-HS12



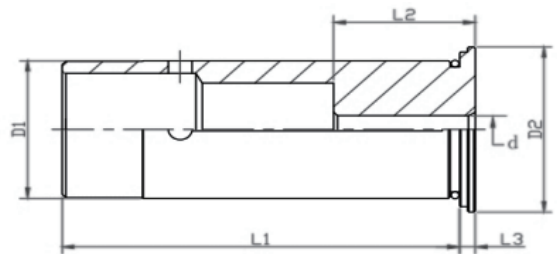
订购号码 Order number	规格 type	尺寸 size						精度 accuracy class
		d	D1	D2	L1	L2	L3	
HS1201200030MIC	Φ3	3	12	16	40	15	3	AA/UP
HS120120003175IIC	Φ1/8"	3.175				15		AA/UP
HS1201200040MIC	Φ4	4				20		AA/UP
HS120120004763IIC	Φ3/16"	4.763				20		AA/UP
HS1201200050MIC	Φ5	5				25		AA/UP
HS1201200060MIC	Φ6	6				30		AA/UP
HS12012000635IIC	Φ1/4"	6.35				30		AA/UP
HS1201200070MIC	Φ7	7				30		AA/UP
HS120120007938IIC	Φ5/16"	7.938				40		AA/UP
HS1201200080MIC	Φ8	8				40		AA/UP
HS1201200090MIC	Φ9	9				40		AA/UP
HS120120009525IIC	Φ3/8"	9.525				40		AA/UP
HS1201200100MIC	Φ10	10				45		AA/UP

HC series-HC20



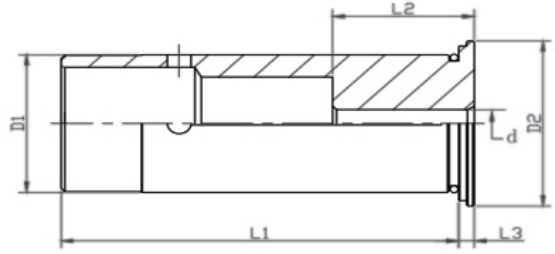
订购号码 Order number	规格 type	尺寸 size						精度 accuracy class
		d	D1	D2	L1	L2	L3	
HC2002000030MIC	Φ3	3	20	24	50.5	14	2	AA/UP
HC200200003175IIC	Φ1/8"	3.175				15		AA/UP
HC2002000040MIC	Φ4	4				20		AA/UP
HC200200004763IIC	Φ3/16"	4.763				21		AA/UP
HC2002000050MIC	Φ5	5				22		AA/UP
HC2002000060MIC	Φ6	6				27		AA/UP
HC20020000635IIC	Φ1/4"	6.35				29		AA/UP
HC2002000070MIC	Φ7	7				31		AA/UP
HC200200007938IIC	Φ5/16"	7.938				33		AA/UP
HC2002000080MIC	Φ8	8				33		AA/UP
HC2002000090MIC	Φ9	9				33		AA/UP
HC200200009525IIC	Φ3/8"	9.525	20	24	50.5	33	2	AA/UP
HC2002000100MIC	Φ10	10				33		AA/UP
HC2002000110MIC	Φ11	11				35		AA/UP
HC2002000120MIC	Φ12	12				35		AA/UP
HC2002000127IIC	Φ1/2"	12.7				35		AA/UP
HC2002000130MIC	Φ13	13				35		AA/UP
HC2002000140MIC	Φ14	14				35		AA/UP
HC2002000150MIC	Φ15	15				35		AA/UP
HC200200015875IIC	Φ5/8"	15.875				35		AA/UP
HC2002000160MIC	Φ16	16	35	AA/UP				

HC series-HC25



订购号码 Order number	规格 type	尺寸 size						精度 accuracy class
		d	D1	D2	L1	L2	L3	
HC2502500060MIC	Φ6	6	25	29	54.5	27	2	AA/UP
HC2502500080IIC	Φ8	8				33		AA/UP
HC2502500100MIC	Φ10	10	25	29	54.5	33	2	AA/UP
HC2502500120IIC	Φ12	12				35		AA/UP
HC2502500140MIC	Φ14	14				43		AA/UP
HC2502500160MIC	Φ16	16				43		AA/UP
HC2502500180IIC	Φ18	18				43		AA/UP
HC2502500200MIC	Φ20	20				43		AA/UP

HC series-HC32

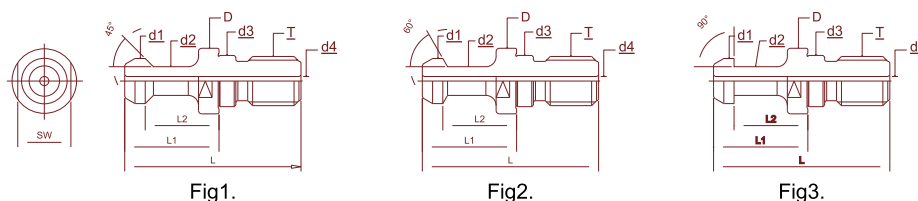


订购号码 Order number	规格 type	尺寸 size						精度 accuracy class
		d	D1	D2	L1	L2	L3	
HC3203200060MIC	Φ6	6	32	35.5	60.5	27	2	AA/UP
HC32032000635IIC	Φ1/4"	6.35				29		AA/UP
HC3203200070MIC	Φ7	7				31		AA/UP
HC320320007938IIC	Φ5/16"	7.938				33		AA/UP
HC3203200080MIC	Φ8	8				33		AA/UP
HC3203200090MIC	Φ9	9				33		AA/UP
HC320320009525IIC	Φ3/8"	9.525				33		AA/UP
HC3203200100MIC	Φ10	10				33		AA/UP
HC3203200110MIC	Φ11	11				35		AA/UP
HC3203200132MIC	Φ12	12				35		AA/UP
HC3203200127MIC	Φ1/2"	12.7				35		AA/UP
HC3203200130MIC	Φ13	13				35		AA/UP
HC3203200140MIC	Φ14	14				43		AA/UP
HC3203200150MIC	Φ15	15				43		AA/UP
HC320320015875IIC	Φ5/8"	15.875				43		AA/UP
HC3203200160MIC	Φ16	16				43		AA/UP
HC3203200170MIC	Φ17	17				43		AA/UP
HC320320017461IIC	Φ11/16"	17.461				43		AA/UP
HC3203200180MIC	Φ18	18				43		AA/UP
HC3203200190MIC	Φ19	19				43		AA/UP
HC32032001950IIC	Φ3/4"	19.05				43		AA/UP
HC3203200200MIC	Φ20	20				43		AA/UP
HC320320020638IIC	Φ13/16"	20.638				43		AA/UP
HC3203200220MIC	Φ22	22				47		AA/UP
HC32032002225IIC	Φ7/8"	22.225				47		AA/UP
HC320320023813IIC	Φ15/16"	23.813				47		AA/UP
HC3203200250MIC	Φ25	25				47		AA/UP
HC3203200254IIC	Φ1"	25.4				47		AA/UP

Drawbar

拉钉

BT系列



BT.No	D	d1	d2	d3	d4	L	L1	L2	SW	T-UNG	Fig	Ø	产品图片/备注
BT30-45	16.5	11	7	12.5	-	43	23	18	13	M12*1.75P	1	45	
BT30-45-W					3								
BT30-60					-								
BT30-60-W					3								
BT30-90					-								
BT30-90-W					3								
BT40-45	23	15	10	17	-	60	35	28	19	M16*2.0P	1	45	
BT40-45-W					4								
BT40-60					-								
BT40-60-W					4								
BT40-90					-								
BT40-90-W					4								
BT50-45	38	23	17	25	-	85	45	35	30	M24*3.0P	1	45	
BT50-45-W					5								
BT50-60					-								
BT50-60-W					5								
BT50-90					-								
BT50-90-W					5								

BT-MTB系列

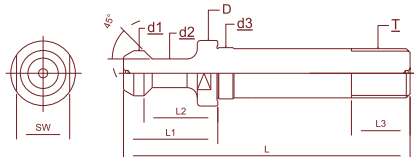
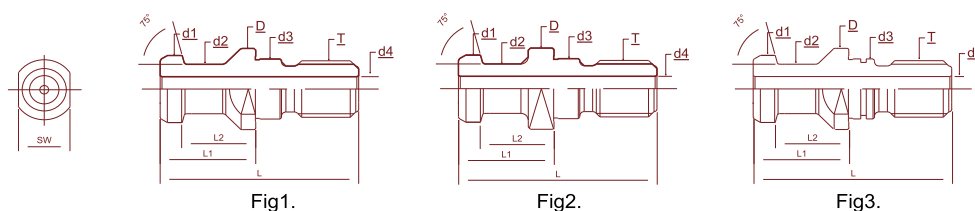


Fig1.

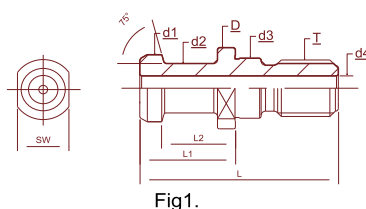
BT. No	D	d1	d2	d3	L3	L	L1	L2	SW	T-UNG	Fig	Ø	产品图片/备注
BT30-MTB2	16.5	11	7	12.5	20	-	23	18	13	M10*1.5P	1	45	
BT30-MTB3										M12*1.75P			
BT40-MTB2	23	15	10	17	25	115	35	28	19	M10*1.5P	1	45	
BT40-MTB3										M12*1.75P			
BT40-MTB4										M16*2.0P			
BT50-MTB3	38	23	17	25	40	170	45	35	30	M12*1.75P	1	45	
BT50-MTB4										M16*2.0P			
BT50-MTB5										M20*2.5P			

JIS/JSB/DIN系列



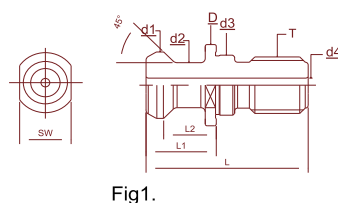
BT. No	D	d1	d2	d3	d4	L	L1	L2	SW	T-UNG	Fig	Ø	产品图片/备注
JIS30P	16.5	12	8	12.5	2.5	43.4	23.4	18.4	13	M12*1.75P	1	75	
JSB6339-30											2		
JIS40P	23	19	14	17	7	54	29	23	19	M16*2.0P	1	75	
JSB6339-40											2		
JIS50P	36	28	21	25	11	74	34	25	30	M24*3.0P	1	75	
JSB6339-50											2		
DIN69872-30A	17	13	9	13	2.5	44	24	19	14	M12*1.75P	1	75	
DIN69872-30B											3		
DIN69872-40A	23	19	14	17	7	54	26	20	19	M16*2.0P	1	75	
DIN69872-40B											3		
DIN69872-50A	36	28	21	25	11	74	34	25	30	M16*2.0P	1	75	
DIN69872-50B											3		

ISO7388系列



ISO7388. No	D	d1	d2	d3	d4	L	L1	L2	SW	T-UNG	Fig	Ø	产品图片/备注
ISO7388/2-30A	17	13	9	13.00	-	44	24	19	14				
ISO7388/2-40A	23	19	14	17.00	7	54	26	20	19				
ISO7388/2-50A	36	28	21	25.00	11	74	34	25	30				

MAZAK系列



MAZAK. No	D	d1	d2	d3	d4	L	L1	L2	SW	T-UNG	Fig	Ø	产品图片/备注
MAZAK-BT40-45	23	18.8	12.45	17.00	6	44.1	19.1	14.03	19	M16*2.0P	1	45	
MAZAK-BT50-45	35.5	28.95	20.83	25.00	11	65.2	25.2	17.58	30	M24*3.0P			

CAT系列

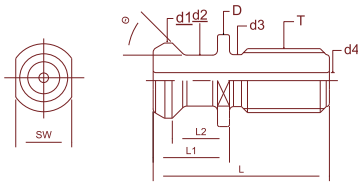


Fig1.

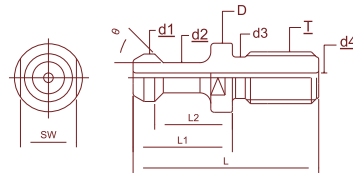










Fig2.

英制尺寸参数表 Imperial Dimension Parameters

Cat. No	D	d1	d2	d3	d4	L	L1	L2	SW	T-UNG	Fig	⊙	产品图片/备注
CAT30-45-ANSI	0.65	0.52	0.385	0.385	-	1.10	0.46	0.32	0.53	1/2"-12	1	45	
CAT40-45-ANSI	0.94	0.74	0.490	0.490	-	1.50	0.64	0.44	0.75	5/8"-11			
CAT50-45-ANSI	1.44	1.14	0.820	0.820	-	2.30	1.00	0.700	1.25	1"-8			
CAT40-45-W	0.94	0.74	0.490	0.490	0.281	1.50	0.64	0.44	0.75	5/8"-11			
CAT50-45-W	1.44	1.14	0.820	0.820	0.468	2.30	1.00	0.700	1.25	1"-8			
CAT40-45-MAS	0.905	0.590	0.394	0.512	-	2.25	1.266	0.99	0.748	5/8"-11	2	45	
CAT40-60-MAS												60	
CAT40-90-MAS												90	
CAT50-45-MAS	1.496	0.906	0.669	0.827	-	1.772	1.378	1.181	1"-8	45			
CAT50-60-MAS										60			
CAT50-90-MAS										90			
CAT40-45	0.905	0.590	0.394	0.512	0.157	2.25	1.266	0.99	0.748	5/8"-11	2	45	
CAT40-60												60	
CAT40-90												90	
CAT50-45	1.496	0.906	0.669	0.827	0.256	1.772	1.378	1.181	1"-8	45			
CAT50-60										60			
CAT50-90										90			
CAT30-45-M	0.65	0.52	0.385	0.385	-	1.10	0.46	0.32	0.53	M12*1.75P	1	45	
CAT40-45-M	0.94	0.74	0.49	0.49	-	1.5	0.64	0.44	0.75	M16*2.0P			
CAT50-45-M	1.44	1.14	0.820	0.820	-	2.30	1.0	0.700	1.25	M24*3.0P			

公制尺寸对照参数表 Metric Size Comparison Parameters

Cat. No	D	d1	d2	d3	d4	L	L1	L2	SW	T-UNG	Fig	⊙	产品图片/备注
CAT30-45-ANSI	16.5	13.21	9.78	9.78	-	27.94	11.68	8.13	13.46	1/2"-12	1	45	
CAT40-45-ANSI	23.88	18.8	12.45	12.45	-	38.1	16.26	11.18	19.05	5/8"-11			
CAT50-45-ANSI	36.58	28.96	20.83	20.83	-	58.42	25.4	17.78	31.75	1"-8			
CAT40-45-W	23.88	18.8	12.45	12.45	6.35	38.1	16.26	11.18	19.05	5/8"-11			
CAT50-45-W	36.58	28.96	20.83	20.83	12.7	58.42	25.4	17.78	31.75	1"-8			
CAT40-45-MAS	23	15	10	13	-	57	32	25	19	5/8"-11	2	45	
CAT40-60-MAS												60	
CAT40-90-MAS												90	
CAT50-45-MAS	38	23	17	21	-	85	45	35	30	1"-8		45	
CAT50-60-MAS												60	
CAT50-90-MAS											90		
CAT40-45	23	15	10	13	4	57	32	25	19	5/8"-11	2	45	
CAT40-60												60	
CAT40-90												90	
CAT50-45	38	23	17	21	6.5	85	45	35	30	1"-8		45	
CAT50-60												60	
CAT50-90											90		
CAT30-45-M	16.5	13.21	9.78	9.78	-	27.94	11.68	8.13	13.46	M12*1.75P	1	45	
CAT40-45-M	23.88	18.8	12.45	12.45	-	38.1	16.26	11.18	19.05	M16*2.0P			
CAT50-45-M	36.58	28.96	20.83	20.83	-	58.42	25.4	17.78	31.75	M24*3.0P			

高速雕铣系列

High-Speed Engraving and Milling

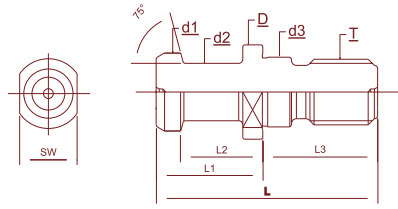


Fig1.

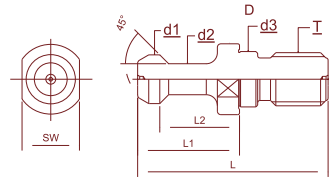


Fig2.

No	D	d1	d2	d3	L3	L	L1	L2	SW	T-UNG	Fig	Ø	产品图片/备注
ISO20	11.4	9.0	6.0	8.5	14	26	12	9.0	10	M8*1.25P	1	75	
ISO25	11.9	10.0	7.0	9.0	16	32	16	11.5	10	M8*1.25P	1		
S15T*	10	7.0	5.0	6.5	11	26	15	11.5	8	M6*1.0P	1	75	
S20T*	13	9.5	7.0	8.5	14	34.5	20.5	16	11	M8*1.25P	1		
BT15-45	10	7.0	4.0	6.5	11.5	28.3	16.8	13.5	8	M6*1.0P	2	45	
BT20-45	13	8.5	6.1	9.0	19	37	18	14	11	M8*1.25P	2	45	
ISO10	8.5	6.0	4.0	5.5	9.5	20	11.5	7.5	7	M5*0.8P	1	75	
ISO15	10	7.0	5.0	6.5	11	23	12	8.5	9	M6*1.0P	1	75	

ISO30-R3.0 木工机专用

Woodworking Machinery Specialized

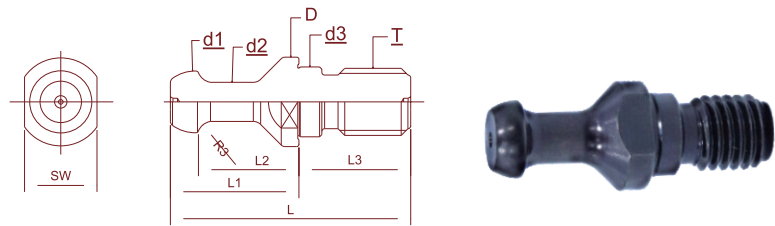
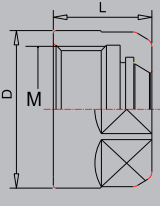


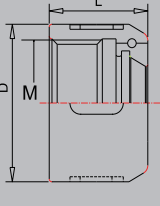

Fig1.

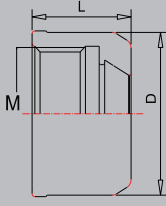
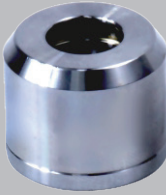
ISO7388. No	D	d1	d2	d3	d4	L	L1	L2	SW	T-UNG	Fig	Ø	产品图片/备注
ISO7388/2-30A-R3.0	17	12	8	13.00	-	44	24	19.5	14	M12*1.75P	1		

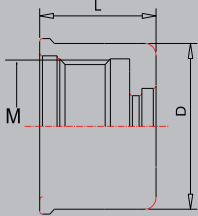
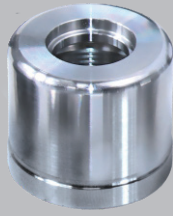
NUT



螺母

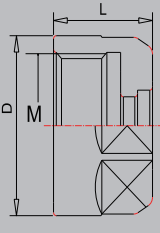

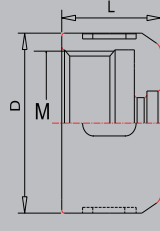

	Model No.	D	L	M	简图	产品图片	适用扳手
Standard Nut 普通螺帽	ER8A	12	10.8	M10*0.75			ER8A
	ER11A	19	11/13	M14*0.75			ER11A
	ER16A	28	18	M22*1.5			ER16A
	ER20A	34	19.5	M25*1.5			ER20A
	ER25UM	42	20	M32*1.5			ER25UM
	ER32UM	50	23.5	M40*1.5			ER32UM
	ER40UM	63	25.5	M50*1.5			ER40UM
	ER50UM	78	35	M64*2.0			ER50UM
M Type Nut M 型螺帽	ER8M	12	10.8	M10*0.75			ER8M
	ER11M	16	12	M13*0.75			ER11M
	ER16M	22	18	M19*1.0			ER16M
	ER20M	28	19	M24*1.0			ER20M
	ER25M	35	20	M30*1.0			ER25M
MS Type Nut MS 型螺帽	ER11MS	16	12/15	M13*0.75			ER11MS
	ER16MS	22	19	M19*1.0			ER16MS
	ER20MS	28	19.5	M24*1.0			ER20MS
	ER25MS	35	20	M30*1.0			ER25MS

OZ Type Nut OZ 型螺帽	OZ16	43	24	M33*1.5			OZ16
	OZ20	50	28	M42*2.0			OZ20
	OZ25	62	30	M48*2.0			OZ25
	OZ32	72	33.5	M62*2.5			OZ32
	OZ40	85	37	M68*2.5			OZ40

ER High Speed Nut ER 高速螺帽	Model No.	D	L	M	筒图	产品图片	适用扳手
	GER8	12	10.8	M10*0.75			012轴承扳手
	GER11	19.5	13	M14*0.75			019.5轴承扳手
	GER11-mini	16	12	M13*0.75			016轴承扳手
	GER16	27.5/30	18	M22*1.5			027.5/030 轴承扳手
	GER16-mini	22	18	M19*1.0			022轴承扳手
	GER20	34/35	19	M25*1.5			034/035 轴承扳手
	GER20-mini	27.5	19	M24*1.0			027.5轴承扳手
	GER25	40/42	20	M32*1.5			040/042 轴承扳手
	GER25-mini	35	20	M30*1.0			035轴承扳手
GER32	50	23.5	M40*1.5	050轴承扳手			

SK High Speed Nut SK 高速螺帽	Model No.	D	L	M	筒图	产品图片	适用扳手
	GSK6	19.5	21.3	M15.5*1.0			019.5轴承扳手
	GSK10-1	27.5	24	M21.5*1.0			027.5轴承扳手
	GSK10-2	27	24	M21.5*1.0			027轴承扳手
	GSK10-3	27.5	24	M22*1.0			027.5轴承扳手
	GSK10-4	27	24	M22*1.0			027轴承扳手
	GSK13-1	33	21	M27*1.0			033轴承扳手
	GSK13-2	35	21	M28*1.5			035轴承扳手
	GSK16	40	31	M32*1.5			040轴承扳手
	GSK20	48	*	M40*1.5			048轴承扳手
GSK25	55	37	M45*1.5	055轴承扳手			

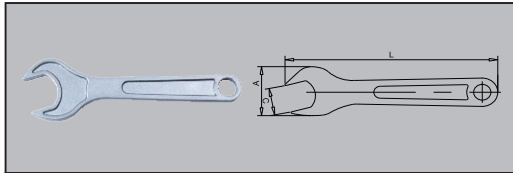
非标螺帽	Model No.	D	L	M	简图	产品图片	适用扳手
	ER11A 左牙	19.5	13	M14*0.75L		 	ER11A
	ER16A-M19*1	28	18	M19*1.0			ER16A
	小径 ER16A-M19*1	22	18	M19*1.0			*
	ER16A-M24*1	28	18	M24*1.0			ER16A
	ER20A-M24*1	34	19	M24*1.0			ER20A
	ER20A-M26*1.5	34	19	M26*1.5			ER20A
	ER20A-M28*1.5	36	20	M28*1.5			*
	ER32UM-M48*1.5	63	23.5	M48*1.5			ER40UM

SK Nut SK螺帽	Model No.	D	L	M	简图	产品图片	适用扳手
	SK6	19.5	15	M15.5*1.0			SK6
	SK10-1	27.5	17	M21.5*1.0			SK10
	GSK10-2	27.5	17	M22*1.0			SK10
	SK13	34	21	M27*1.0			SK13
	SK16	40	24	M32*1.5			SK16
	SK25	33	21	M45*1.5			SK25

SPANNER

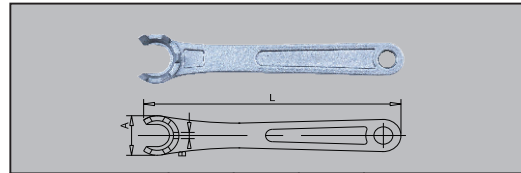
扳手

A型螺母扳手

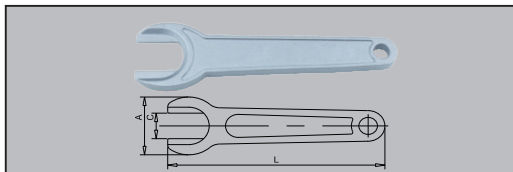


型号	A	C	L	适用螺母
ER11A	37	17	125	ER11-A
ER16A	50	25	168	ER16-A
ER20A	56	30	182	ER20-A

M型螺母扳手

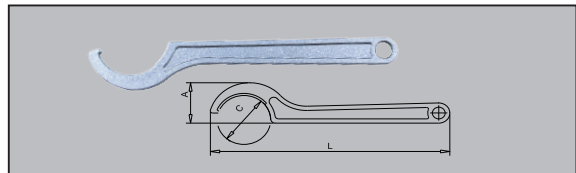


型号	A	B	L	适用螺母
ER8M	12	2.5	77	ER8M
ER11M	16	2.5	97	ER11M
ER16M	22	4	118	ER16M
ER20M	28	4.5	128	ER20M
ER25M	36	4.5	140	ER25M



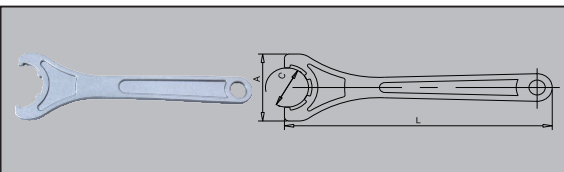
型号	A	C	L	适用螺母
ER11MS	22	10	100	ER11-MS
ER16MS	34	15	135	ER16-MS
ER20MS	45	18	160	ER20-MS
ER25MS	60	23	180	ER25-MS

钩头扳手



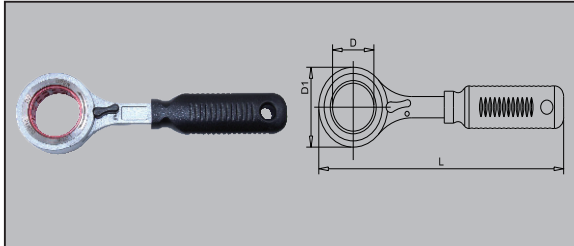
型号	A	C	L	适用螺母
ER25/SK16	30	38-42	187	ER25/SK16
APU13/ER32	38	48-52	210	APU13/ER32
APU16/SK25	38	54-58	222	APU16/SK25
OZ25/C20/ER40	42	55-63	242	
OZ32/C32	45	68-73	278	OZ32/C32

UM型螺母扳手



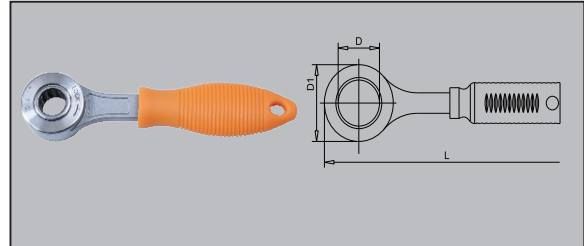
型号	A	C	L	适用螺母
ER25UM	63	37	210	ER25-UM
ER32UM	73	45	250	ER32-UM
ER40UM	90	58	290	ER40-UM

双向轴承扳手



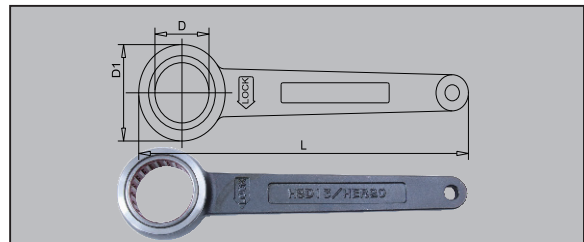
型号	D	D1	L	适用螺母
D16	16	30	140	GER11mini
D19.5	19.5	34	140	GSK06
D22	22	34	140	GER16mini
D27	27	45	160	GSK10
D27.5	27.5	45	160	GSK10/GER16 GER20mini
D30	30	45	160	GER16/GSK10
D32	32	45	160	HER20
D33	33	45	160	GSK13
D34	34	55	185	GER20
D35	35	55	185	GER20/GSK13 GER25mini
D40	40	55	185	GSK16/GER25
D42	42	55	185	GER25/HC16mini
D46	46	67	210	HC16
D48	48	67	210	HC20
D50	50	73	235	GER32/HC20
D55	55	73	235	GSK25
D68	68	89	260	HC32
D70	70	89	260	HC32

微型单向轴承扳手



型号	D	D1	L	适用螺母
D10	16	30	140	GER06 MEGA3S(BIG)
D12	12	30	140	GER08 MEGA4S(BIG)
D14	14	30	140	MEGA6S(BIG)
D16	16	30	140	GER11mini
D18	18	30	140	MEGA8S(BIG)
D20	20	34	140	MEGA6N(BIG)

重型单向轴承扳手



型号	D	D1	L	适用螺母
D25	25	40	160	MEGA8N(BIG)
D30	30	48	200	GER16/GSK10
D35	35	54	210	GER20/GSK13 GER25mini
D40	40	60	240	GSK16/GER25
D50	50	72	270	GER32/HC20

Holder

轴承锁刀座

型号	D	D1	H	L
HSK25	25	D	D	105
HSK32	32	64	165	105
HSK40	40	64	165	105
HSK50	50	D	D	105
HSK63	63	84	170	105
HSK100	100	D	D	105
ISO20	33	D	D	105
ISO25	36	D	D	105
ISO30	50	D	D	105
ISO40	63	D	D	105
ISO50	100	D	D	105
NBT30	46	68	170	105
NBT40	63	84	170	105
NBT50	100	D	D	105

